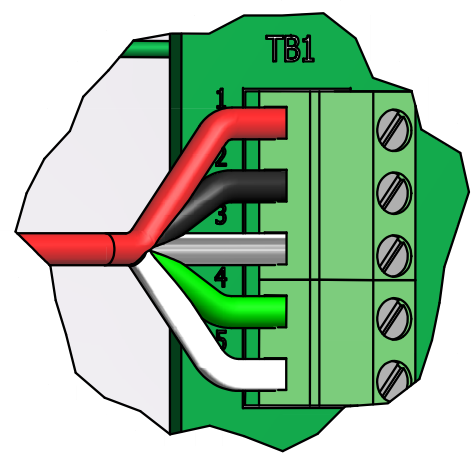
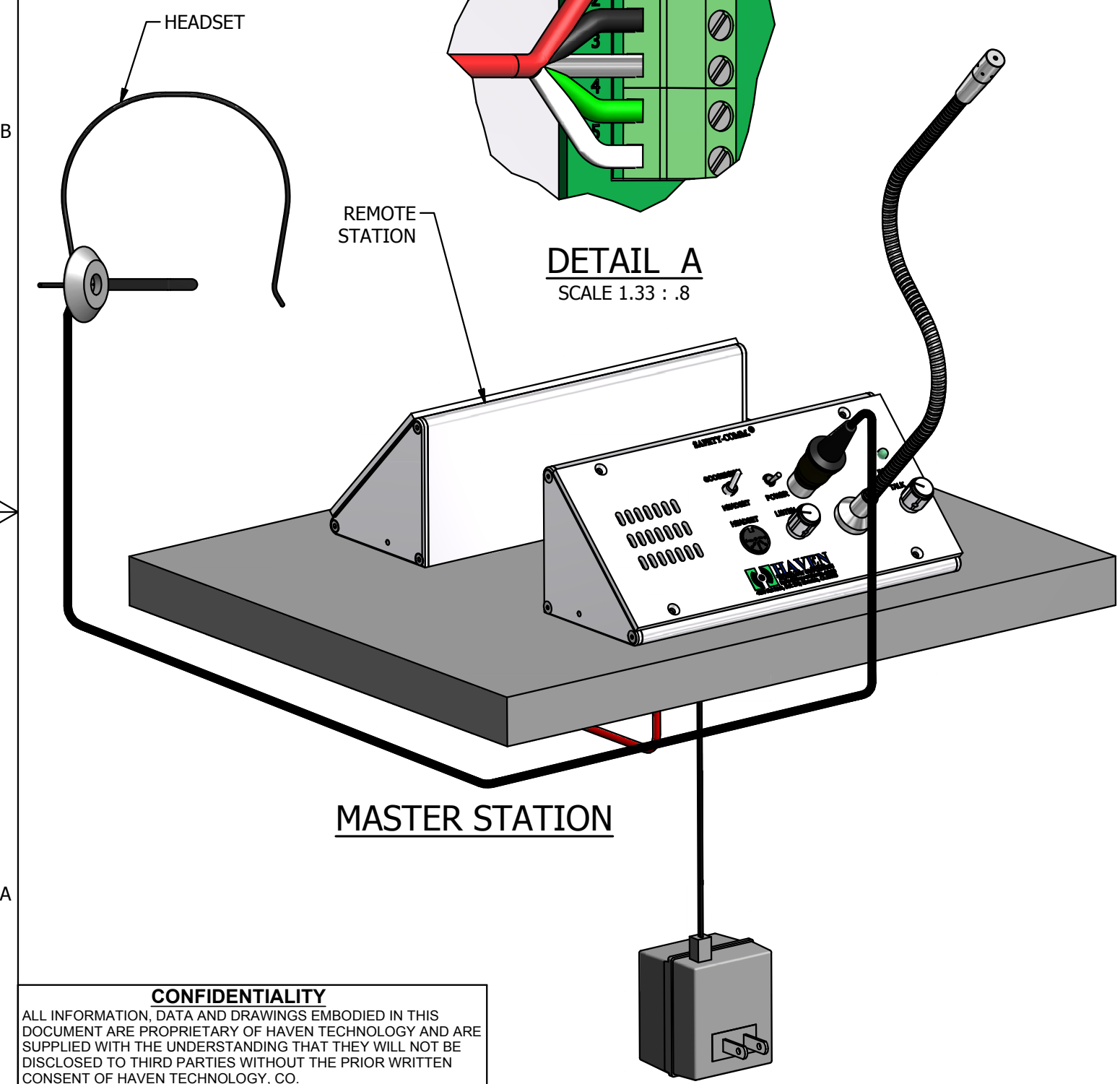


TOOLS REQUIRED:
5/64" HEX KEY (INCLUDED)

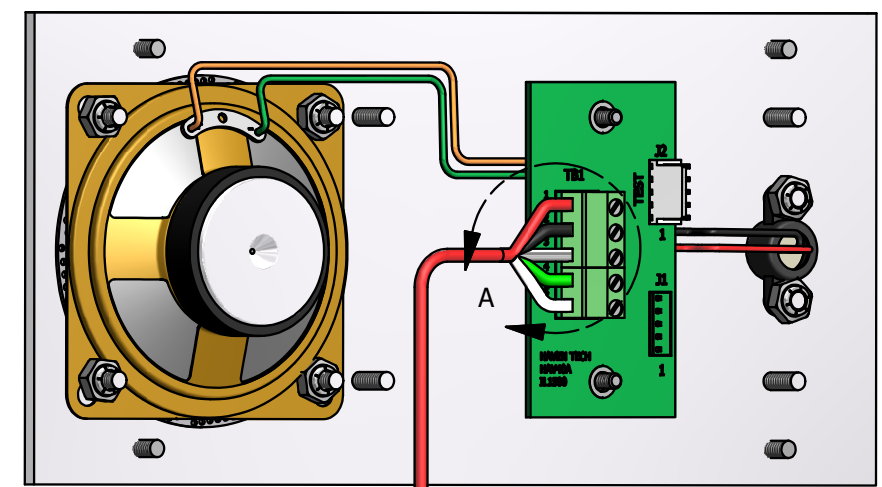


DETAIL A
SCALE 1.33 : .8



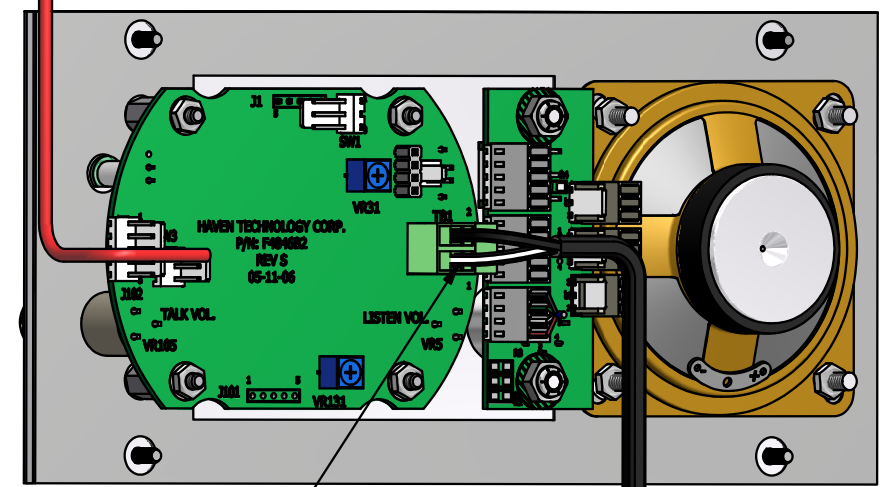
MASTER STATION

REMOTE STATION



FACTORY FURNISHED
FIELD CABLE. CONNECT TO
CORRESPONDING TERMINALS
AS SHOWN (CLASS II WIRING)
BELDEN #87723.

MASTER STATION



CONNECT WIRE WITH
WHITE STRIPE TO TB1
CIR #1

A/C ADPTER
PART #394086-1
MODEL #D41W120300-14/1

CONFIDENTIALITY
ALL INFORMATION, DATA AND DRAWINGS EMBODIED IN THIS
DOCUMENT ARE PROPRIETARY OF HAVEN TECHNOLOGY AND ARE
SUPPLIED WITH THE UNDERSTANDING THAT THEY WILL NOT BE
DISCLOSED TO THIRD PARTIES WITHOUT THE PRIOR WRITTEN
CONSENT OF HAVEN TECHNOLOGY, CO.

**HAVEN
TECHNOLOGY
CORPORATION**

REVISION D:	DRAWN BY:	T.C.	TITLE		PAGE
REVISION C:	DATE:	7/16/2010	INSTALLATION DIAGRAM SC-300HG-DIN		
REVISION B:	SHOP ORDER #				
REVISION A:	DRAWING SIZE:	B	SHEET 1 OF 1	PART NO:	DWG NO: 6566