

ELECTRONIC Two-way COMMUNICATION / Through A Partition



The

SC-350 talk-through communicator is designed for applications where a fire shutter or window shade is present.



Made In U.S.A.

Two-way communication is accomplished through the use of speakers and microphones located on each side of the partition. The Master unit is equipped with a 15" gooseneck microphone, power on/off switch, power-on LED, and external volume controls. The Remote Unit is window-mounted and may incorporate a level 3 bullet-resistive insert.

APPLICATIONS

*Detention Facilities, Movie Theaters
Hospitals, Banks, Subways, Ticket Booths
and other security-sensitive areas*

- Duplex Communication
- Heavy Duty Aluminum Construction
- Background Noise Level Monitoring
- Dimensions of Master Unit: 2.8"x2.8"x8.0"
- Level Detection and Attenuation Control
- Short Circuit Protection
- Low Current Drain
- <1%* Distortion
- Reverse Voltage and Voltage Protection
- Dynamic Noise Reduction Network
- Voice Activated Switch

**Amplifier ratings*

Features and specifications are subject to change without notice.



HAVEN
TECHNOLOGY CORPORATION

OPTIONS

Headset in addition to a gooseneck microphone
Specify SC-350HG.

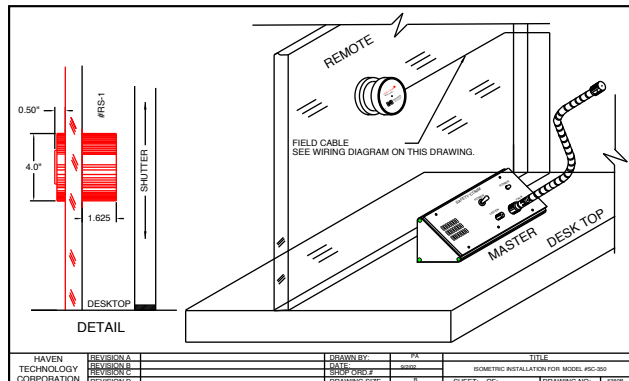


OPERATIONAL SPECIFICATIONS

The SC-350 provides electronic two-way, hands-free audio communications (duplex) between a partition. The SC-350 is equipped with a factory adjusted VOX switch to prevent ambient noise (below 85 decibels) from activating the unit. The SC-350 contains two voice channels, each incorporating a microphone amplifier, VOX switch, compressor, and a power amplifier. The sound amplifier does not exceed a 0.2% total harmonic distortion rating.

The SC-350 is fully operational between 0°C and 50°C.

Each order comes with an AC/DC power supply(120V AC stepped down to filtered 18V DC) and a 1-year warranty.



4130 Flat Rock

Unit 170

Riverside, CA 92505

Phone 951.354.1800

Toll-Free 888.853.4643

Fax 951.354.1805

www.haventech.com



Safety-Comm.® Field Calibration

Questions?

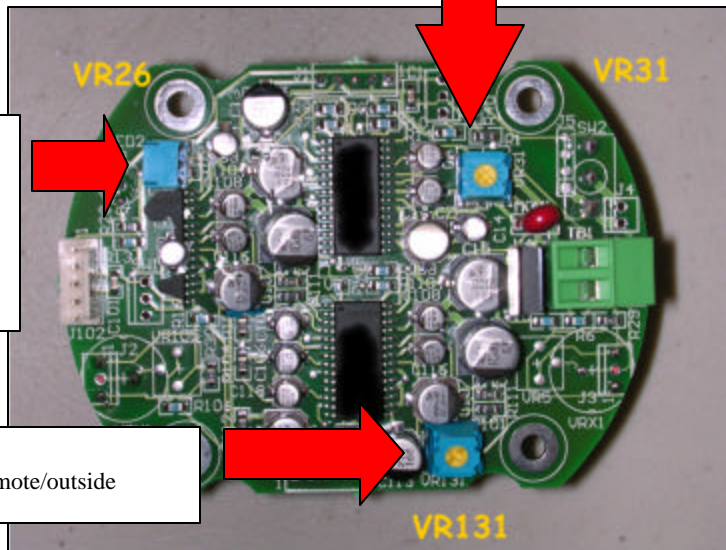
Call: (951) 354-1800

VR31 “master” or inside

VR26 gooseneck dominance.

DO NOT ADJUST! CONSULT THE FACTORY PRIOR TO ADJUSTMENT.

VR131 remote/outside



Symptom: conversation is “clipped”; conversations are cut short.

Solution: **FIRST: NOTE ORIGINAL POSITION OF THE POTENTIOMETERS.** if inside operator’s (IO) conversation is clipped, increase IO’s microphone sensitivity by turning R31 one (1) notch clockwise.

if outside operator’s (OO) conversation is clipped, increase OO’s microphone sensitivity by turning R131 one (1) notch clockwise.

Repeat if necessary.

NOTE: R31 and R131 are “balanced”. Therefore, decreasing one microphone will have the same effect as increasing the other (it’s all relative).

The control assembly must be placed back into the housing to perform correctly. Otherwise, feedback may occur.

“Inside Operator”: gooseneck side (SC-100; SC-300); or circuit board side.

VR26 if adjusted clockwise, will allow the gooseneck/master side mic to dominate the outside microphone. If increased too much, the outside/remote will not be heard at all. Default position is at the 10:00 position